



**KAN-therm
MULTISYSTEM**

> 35 | years of experience
on the installation
market



KAN-therm

ultra**PRESS**

**INNOVATIVENESS AND UNIQUENESS
- ONE SYSTEM, SIX FUNCTIONS**

Install the **future**

1 SYSTEM **KAN-therm** ultraPRESS

1.1	General information	3
1.2	Pipes in the KAN-therm ultraPRESS	4
	PERTAL pipes with aluminum layer	4
	PEXC, PERT and bluePERT pipes with EVOH layer and bluePERTAL with aluminium layer	6
	Scope of use	7
1.3	Joints in multilayer installations with KAN-therm pipe with aluminium layer	8
	„Press“ joints	8
	Construction and features of KAN-therm 16-40 mm ultraPRESS fittings	9
	Identification of KAN-therm ultraPRESS fittings	10
	KAN-therm ultraPRESS fittings with diameters 50 and 63 mm	10
	KAN-therm pressed fittings – assortment	11
	Contact with chemicals, adhesives and sealants	13
	Performing “press” type connections for KAN-therm ultraPRESS fittings	14
	Assembly of KAN-therm ultraPRESS fittings with diameters: 16, 20, 25, 26, 32 and 40 mm	19
	Assembly of KAN-therm ultraPRESS fittings with diameters 50 and 63 mm	21
	Minimum assembly distances	22
	Threaded joints for PERTAL pipes with aluminum layer	22
1.4	Transport and storage	25

System **KAN-therm** ultraPRESS - assortment

Pipes	26
Connectors	28
Accessories	42
Tools	44

1 SYSTEM KAN-therm ultraPRESS

1.1 General information

KAN-therm ultraPRESS is a state-of-the-art, complete installation system consisting of PERTAL polyethylene pipes with aluminum layer, as well as PPSU or brass fittings of Ø16–63 mm.

Connection of the system ultraPRESS elements is based on pressing a stainless steel sleeve on a pipe mounted on a stub of a fitting or coupling ("press" technique). The stub is equipped with O-Rings ensuring complete tightness of the joint and reliable operation of the installation.

The system is designed for indoor water supply installations (cold and hot potable water), central heating installations, cooling installations, technological heating installations and industrial installations (compressed air).

The ultraPRESS system offers the additional possibility of connecting PERT, PEXC and bluePERT pipes with an EVOH layer and bluePERTAL pipes with aluminium layer by using ultraPRESS fittings in brass and PPSU. In this case, the operating conditions for such a connection, described later in this guide, should be checked.

KAN-therm ultraPRESS is characterized by:

- high operating parameters (max. working temperature of 90 °C, permissible malfunction temperature – 100 °C),
- very low thermal elongation of PERTAL pipes with aluminum layer,
- complete lack of oxygen diffusion to installation water,
- guaranteed durability for over 50 years,
- universal pipe applications (one pipe for combined water supply and heating installations),
- resistance to hydraulic impact,
- high smoothness of internal surfaces,
- resistance to scaling,
- physiological and microbiological neutrality in potable water installations,
- environmentally friendly materials,
- easy and quick installation,
- easy and quick assembly (no chamfering or calibration of pipes with diameters of 16-32 mm required),
- low installation weight,
- possibility of executing joints in structural partitions,
- LBP function, i.e. indication of unpressed connections,
- Universality - PERT, PEXC and bluePERT pipes with EVOH layer and bluePERTAL pipes with aluminium layer can be connected.

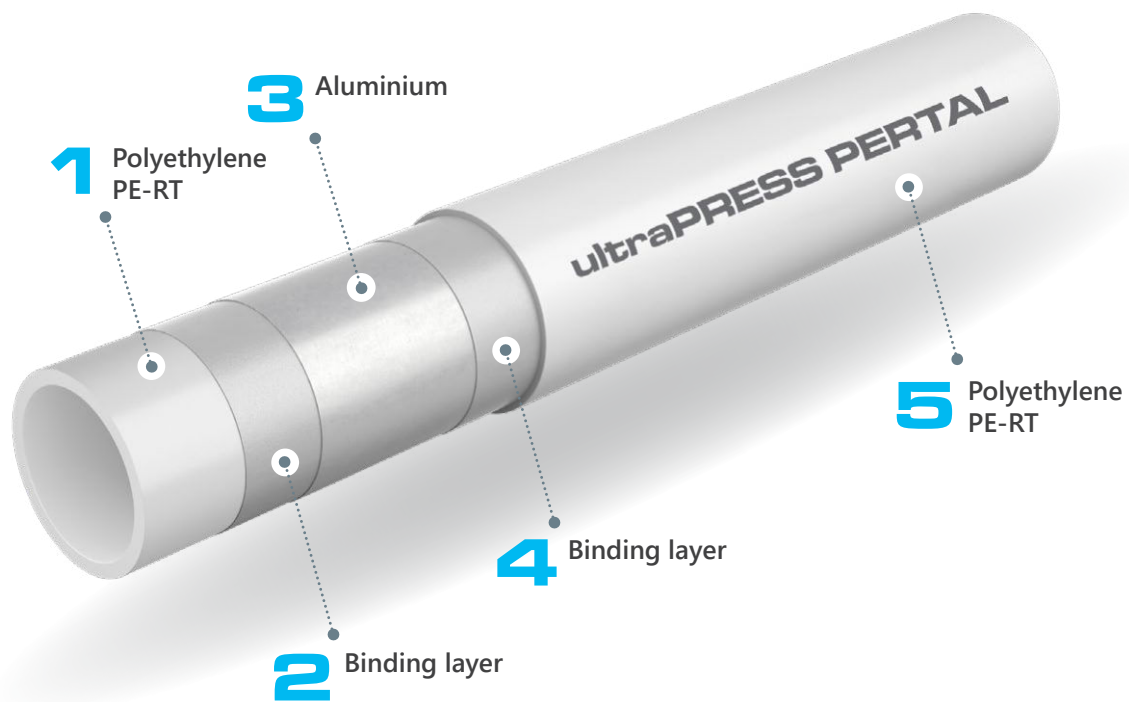
1.2 Pipes in the KAN-therm ultraPRESS

PERTAL pipes with aluminum layer

Multilayer PERTAL pipes with aluminum layer in KAN-therm ultraPRESS system are offered in PE-RT II/Al/PE-RT II construction (diameter range of Ø16–63 mm).

They are made of the following layers: internal layer (base pipe) made of PE-RT polyethylene with increased thermal resistance, middle layer as laser butt-welded aluminium and external layer (coating) made of PE-RT polyethylene as well. An adhesive binding layer is applied between the aluminum and plastic layers.

The aluminum layer serves as a anti-diffusion barrier and lowers the thermal pipe elongation 8 times, as compared to uniform polyethylene pipes. Thanks to the butt welding of aluminium, all the pipe layers have constant, specified thickness and perfectly round cross-section.



Cross-section of a PERTAL pipes with aluminium layer

Physical properties of PERTAL pipes with aluminum layer

Property	Symbol	Unit	Value
Linear elongation coefficient	α	mm/m × K	0,023 – 0,025
Thermal conductivity	λ	W/m × K	0,43
Minimal bending radius	R_{\min}		5 × De - without tools 3,5 × De - while utilizing bending tools
Internal wall roughness	k	mm	0,007



KAN-therm ultraPRESS PERTAL pipes with aluminum layer

Marking, color of pipes

All pipes are marked with permanent descriptions with a 1-m span, containing i. a. the following indications:

Marking description	Example of marking
Name of manufacturer and/or trademark:	KAN-therm ultraPRESS PERTAL
Nominal external diameter x wall thickness	16 x 2
Pipe structure (material)	PE-RT II/Al/PE-RT II
Pipe code	1029196031
Number of standard or Technical Certificate	KIWA KOMO, DVGW
Application class/es with design pressure	Class 2/10 bar, Class 5/10 bar
Date of production	18.08.09
Other manufacturer markings, e.g. running meter, batch number	045 m



Notice – other, additional markings, e.g. numbers of certificates may also be inscribed on the pipe.

Pipe color: white.

Pipes are supplied in coils in lengths depending on the diameter of the pipe and its version, i.e. with or without thermal insulation.

Pipes without thermal insulation are also available in 5 m bars.

Dimension parameters of KAN-therm PERTAL pipes with aluminum layer

DN	External diameter x wall thickness	Wall thickness	Internal diameter	Weight by unit	Number in roll/bar	Water capacity
	mm x mm	mm	mm	kg/m	m	l/m
PERTAL						
16	16 x 2,0	2,0	12	0,129	200- 600 / -	0,113
20	20 x 2,0	2,0	16	0,152	100 / 5	0,201
25	25 x 2,5	2,5	20	0,239	50 / 5	0,314
26	26 x 3,0	3,0	20	0,296	50 / -	0,314
32	32 x 3,0	3,0	26	0,365	50 / 5	0,531
40	40 x 3,5	3,5	33	0,510	25 / 5	0,855
50	50 x 4,0	4,0	42	0,885	- / 5	1,385
63	63 x 4,5	4,5	54	1,265	- / 5	2,290

PEXC, PERT and bluePERT pipes with EVOH layer and bluePERTAL with aluminium layer

The basic configuration of the ultraPRESS system is to combine ultraPRESS fittings with PERTAL pipe with aluminium layer, in the entire diameter range 16-63 mm. The special design of ultraPRESS fittings gives the additional option of connecting PERT, PEXC, bluePERT and bluePERTAL pipes in the 16-25 mm diameter range.

The operating conditions for pipes, depending on the application class, type of pipe and its diameter, are presented in the table further on in this guidebook.



KAN-therm ultraPRESS tee in combination with bluePERT, PEXC and PERT pipe.

Scope of use

KAN-therm ultraPRESS pipes and fittings are in full compliance with all applicable standards, which guarantees their long-term and reliable operation as well as full security of assembly and use of the installation.

- PPSU and brass ultraPRESS joints utilizing pressed rings and threaded brass fittings: compliance with approved for use by the National Institute of Hygiene,
- PERTAL pipes: compliance with EN ISO 21003–2:2009, approved for use by the National Institute of Hygiene,

The working parameters and scopes of use of KAN-therm PERTAL pipe installations are presented in the table.

Application (acc. to ISO 10508)	T_{op}/T_{max} [°C]	Dimensions [mm]	Operating pressure P_{op} [bar]		Connection type	
			PERTAL	PERTAL	"press"	screw
					PERTAL	PERTAL
Cold tap water Hot tap water [Application class 1(2)]	60(70)/80	16 × 2,0	10	PERTAL	+	+
		20 × 2,0			+	+
		25 × 2,5			+	+
		26 × 3,0			+	+
		32 × 3,0			+	-
		40 × 3,5			+	-
		50 × 4,0			+	-
		63 × 4,5			+	-
Radiant heating, low-temperature radiator heating [Application class 4]	60/70	16 × 2,0	10	PERTAL	+	+
		20 × 2,0			+	+
		25 × 2,5			+	+
		26 × 3,0			+	+
		32 × 3,0			+	-
		40 × 3,5			+	-
		50 × 4,0			+	-
		63 × 4,5			+	-
Radiator heating [Application class 5]	80/90	16 × 2,0	10	PERTAL	+	+
		20 × 2,0			+	+
		25 × 2,5			+	+
		26 × 3,0			+	+
		32 × 3,0			+	-
		40 × 3,5			+	-
		50 × 4,0			+	-
		63 × 4,5			+	-

For all classes and diameters, failure temperature $T_{mal} = 100$ °C

The operating parameters and applications scope of the KAN-therm ultraPRESS system with the use of PEXC, PERT, bluePERT and bluePERTAL pipes are presented in the table:

Application class	Operating pressure P_{op} [bar]					Connection type	
	T_{op}/T_{max}	Dimensions	PEXC	PERT	bluePERT, bluePERTAL*	„press“	screw
	[°C]	[mm]				PEXC, PERT, bluePERT, bluePERTAL*	PEXC, PERT, bluePERT, bluePERTAL*
Cold tap water	20	16 × 2,0	10	10	-	+	+
		20 × 2,0	10	10	-	+	+
Hot tap water [Application class 1]	60/80	16 × 2,0	10	10	-	+	+
		20 × 2,0	8	8	-	+	+
Hot tap water [Application class 2]	70/80	16 × 2,0	10	10	-	+	+
		20 × 2,0	6	8	-	+	+
Underfloor heating, Low temperature heating, radiant heating [Application class 4]	60/70	16 × 2,0*	10	10	8	+	+
		20 × 2,0	8	8	6	+	+
		25 × 2,5	-	-	6	+	-
Radiator heating [Application class 5]	80/90	16 × 2,0	8	8	-	+	+
		20 × 2,0	6	6	-	+	+

Operating pressure calculated according to the standards: PN-EN ISO 15875-2:2004 for PEXC pipes and PN-EN ISO 21003-2:2009 for PERT, bluePERT and bluePERTAL pipes.

1.3 Joints in multilayer installations with KAN-therm pipe with aluminium layer

The basic method of connecting pipes in the KAN-therm ultraPRESS is using the “press” technique utilizing a radially pressed stainless steel sleeve. Threaded joints may also be used to connect pipes to devices and appliances.

„Press“ joints

The execution of „press“ type joints is based on radially pressing stainless steel sleeve located on the stub of a fitting. The stub is equipped with O-Ring sealing made of synthetic EPDM rubber, resistant to high temperatures and pressure. The sleeve is pressed with a manual or electric press tool equipped, depending on the diameter of the pipe, with “U”, “C”, or “TH” profile jaws (standard pressing). Such a connection allows conducting the installation in structural partitions (in flooring finishing coats and under layers of plaster).

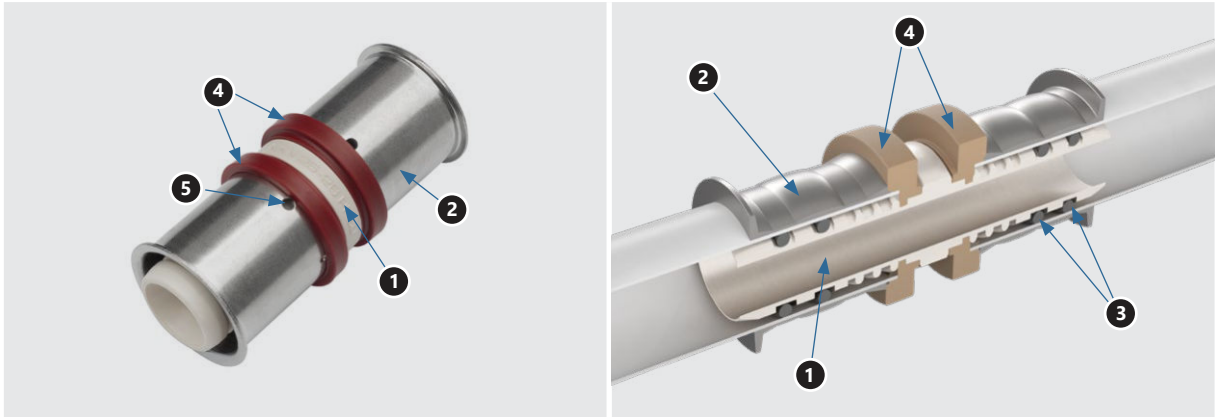
Press KAN-therm fittings, depending on the diameter, are available in three construction types. They differ in terms of outer appearance, methods of assembly and some functions:

- KAN-therm ultraPRESS fittings (with colored rings) – diameters 16, 20, 25, 26, 32 and 40 mm,
- KAN-therm ultraPRESS fittings – diameters 50 and 63 mm,
- KAN-therm ultraPRESS fittings (without base rings - old construction) - diameters 50 and 63 mm.

Construction and features of KAN-therm 16-40 mm ultraPRESS fittings

Thanks to their special construction this type of KAN-therm ultraPRESS fittings is characterized by:

- a function of signaling not-pressed LBP joint (does not refer to the fittings with 40 mm diameter),
- possibility of using U, C or TH profile jaws interchangeably (depending on the diameter and jaw manufacturer),
- elimination of need to chamfer the edge of the pipe,
- precise jaws positioning on the ring,
- colored, plastic specifying the fitting diameter rings.



View and cross-section of a KAN-therm ultraPRESS with a colored ring fitting

1. Coupling body
2. Pressed stainless steel sleeve with inspection holes
3. EPDM O-Rings
4. Color base ring
5. Inspection holes in the stainless steel sleeve

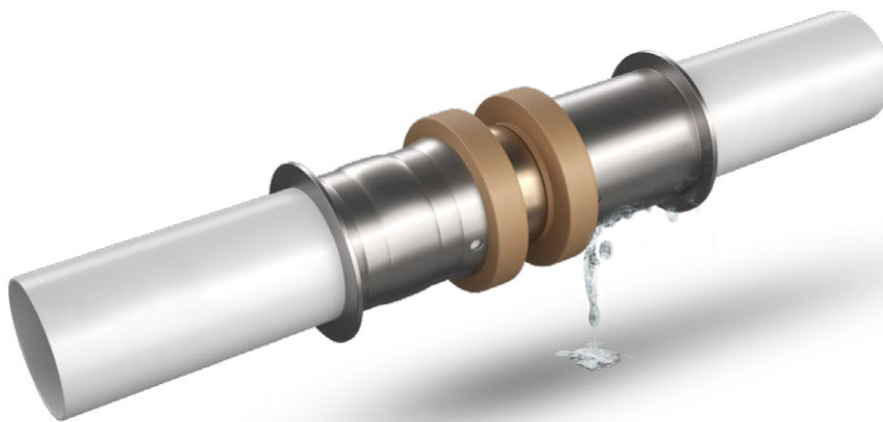
LBP – „Leak Before Press“ – an mistakenly not-pressed joints are signaled by a water leak at the stage of preliminary non-pressurized installation filling, before the pressure test. This function complies with DVGW guidelines (“controlled leak”).



Notice:

According to DVGW guidelines, the LBP function can be seen as controlled leakage at a pressure of:

- in compressed air installations from 1,0 to 3,0 bar,
- in installations filled with water from 1,0 to 6,5 bar.



LBP function in action – leak before press

Identification of KAN-therm ultraPRESS fittings

KAN-therm ultraPRESS fittings with diameters of 16 mm up to 40 mm are equipped with special plastic base ring, the color of which depends on the diameter of the pipe being connected. This solution facilitates the identification of the fitting and, in consequence, installation works at the construction site and in the warehouse. Irrespective of the color identification, each stub has a marking stating the diameters of pipes to be connected.

The dimensions of pipes (external diameter × wall thickness) are also inscribed on the stainless steel sleeve.

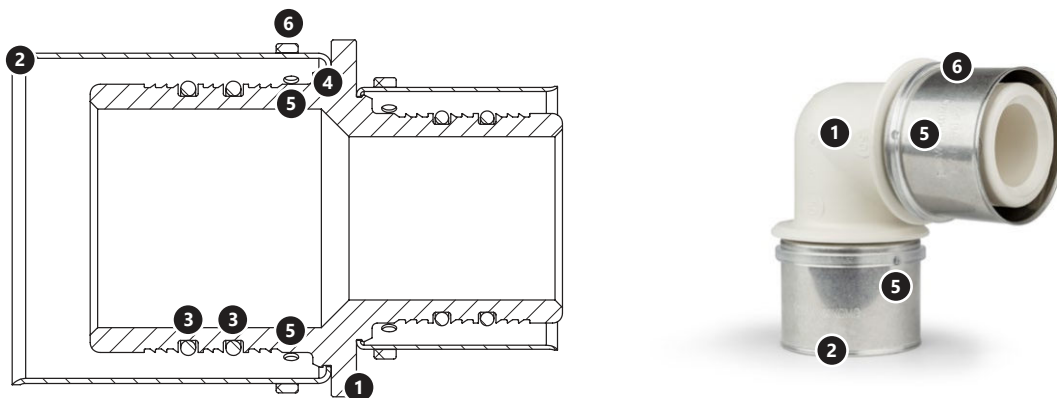


* 40 mm fittings do not possess LBP function itself

KAN-therm ultraPRESS fittings with diameters 50 and 63 mm

All fittings of diameter – 50 and 63 mm (including 50 and 63 mm stubs of reduction joints) differ in construction from their substitutes with smaller diameters. They are distinguished by plastic transparent base ring embedded on a fittings body, the lack of LBP function and a slightly different method of assembly in terms of pipe ending treatment.

i **Note! Old designs of 50 and 63 mm diameter fittings may be available on the market, characterized by the absence of the LBP function, the lack of a base ring and a different way of positioning the jaws. Detailed installation guidelines are described later in this guide.**



View and cross-section of KAN-therm ultraPRESS fitting without a colored ring.

1. Fitting body
2. Pressed stainless steel sleeve
3. EPDM O-Rings
4. Rings positioning the stainless steel sleeve on the body
5. Inspection holes in the sleeve
6. Plastic transparent base ring

KAN-therm pressed fittings – assortment

The KAN-therm ultraPRESS system offers a wide selection of radially pressed fittings:

- elbows and tees, couplings,
- elbows, tees and other fittings with 15 mm nickel-plated pipes for connecting to radiators and appliances,
- fittings with male and female threads, and eurocone adapters,
- tap connections,
- transition couplings.

KAN-therm ultraPRESS fittings are offered in two structural variations:

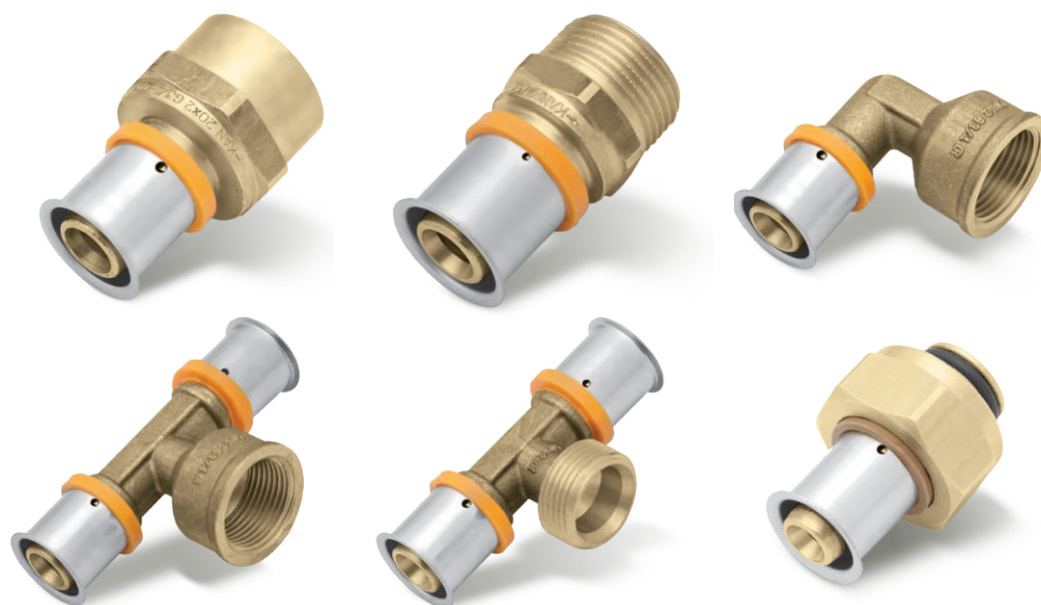
KAN-therm ultraPRESS fittings with colored ring (diameters 16–40 mm)



KAN-therm ultraPRESS radially pressed fittings



KAN-therm ultraPRESS pressed fittings with 15 mm pipes for connecting to radiators*



KAN-therm ultraPRESS pressed fittings with threads and eurocone adapters*



KAN-therm ultraPRESS pressed fittings – tap connections*

- i** *The application of KAN-therm ultraPRESS system fittings for connecting radiators and water supply taps is described in the chapter titled "Connections of water supply and heating installation devices in the KAN-therm system".

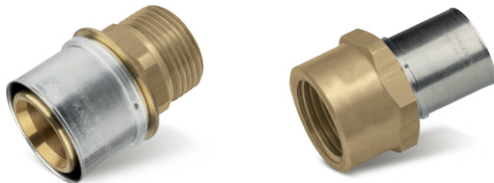


KAN-therm ultraPRESS pressed couplings – transition fittings

KAN-therm ultraPRESS fittings without colored ring (diameters 50–63 mm)



KAN-therm ultraPRESS fittings



Threaded KAN-therm ultraPRESS fittings



The application of KAN-therm ultraPRESS system fittings for connecting radiators and water supply taps is described in the chapter titled “Connections of water supply and heating installation devices in the KAN-therm system”.

All KAN-therm ultraPRESS fittings with the diameter range 16-63 mm are made of a reliable structural material polyphenylsulfone (PPSU) or high quality CW617N brass. PPSU is used to manufacture elbows, tees and tap connections. The properties and advantages of PPSU are discussed in the chapter KAN-therm Push system: PPSU – perfect installation material.



Contact with chemicals, adhesives and sealants

- Secure the plastic (PPSU) elements of KAN-therm system against contact with paints, primers, solvents or materials containing solvents, e.g. varnish, aerosols, expanding foams, adhesives, etc. In unfavorable circumstances, these substances could potentially damage the plastic elements of the system.
- Make sure that substances sealing the joints, cleaning solutions or solutions used to insulate KAN-therm system components do not contain any compounds which could cause stress cracks. These include ammonia, solutions containing ammonia, aromatic solvents and compounds retaining oxygen (e.g. ketone or ether) or chlorinated hydrocarbons.
- Do not use expanding foams based on methacrylate, isocyanate and acrylate when in contact with plastic (PPSU) elements of KAN-therm system. Avoid direct contact of plastic (PPSU) fittings and pipes with adhesive tapes and adhesives for insulation.
- In threaded fittings, use a proper amount of tow as to leave the ending of the thread bare and visible. Too much tow may disrupt the thread. Winding tow just above the first coil of the thread will prevent the tow from tangling up and the thread from being damaged.
- When making screw (threaded) connections, precautions must be taken in the form of: the use of an appropriate amount of sealing material (tow), the correct degree of screwing in of the connection. In unfavorable situations, a threaded connection made with too much sealant and/or screwed in with excessive force can lead to critical mechanical stresses in the connector material and damage to the product.
- Minimise the risk of prolonged dampness and condensation on the surface of pipes and fittings.
- Do not use brass components of the KAN-therm system in environments where ammonia of biological origin is present or may be present, particularly in livestock facilities.
- Pay attention to connecting different types of threads. In unfavorable cases, the outlines of the internal and external threads may collide, which may lead to the building up of excessive mechanical stresses in the fitting material and consequent failure of the fitting.



Notice! Do not use chemical sealants or adhesives.

Summary of assembly properties for ultraPRESS fittings

Fitting structure	Scope of diameters	pressing profile	Pipe ending treatment method		
			calibration	edge chamfering	
ultraPRESS with colored ring 	Color of ring	U or TH	16	No	No
			20	No	No
			25	Recommended	No
		U, C or TH ⁽¹⁾	26 ⁽²⁾	Recommended	No
			32	Recommended	No
			40	Yes	Yes
ultraPRESS with transparent ring 	50	TH	Yes	Yes	
	63		Yes	Yes	

1) jaws name (profile) depends on the manufacturer

2) In 2024 REMS C26 jaws has been renamed into U26. KAN-therm branded jaws dedicated for 26 mm diameter remain C26.

Performing “press” type connections for KAN-therm ultraPRESS fittings

Tools

To perform connections in KAN-therm ultraPRESS, use tools available in KAN-therm system offer - see the table below.

Manufacturer	Press type		Diameter [mm]	Jaws/collars		Adapter	
	Description	Code		Description	Code	Description	Code
KAN-therm	AC 3000 DC 4000	1936267239 1936267238	16	U	1936267257	-	-
			16	TH	1936267241	-	-
			20	U	1936267258	-	-
			20	TH	1936267242	-	-
			25	U	1936267259	-	-
			25	TH	1936267271	-	-
			26	C	1936267245	-	-
			26	TH	1936267243	-	-
			32	U	1936267260	-	-
			32	TH	1936267244	-	-
			40	U	1936267261	-	-
			40	TH	1936267272	-	-

Manufacturer	Press type		Diameter [mm]	Jaws/collars		Adapter				
	Description	Code		Description	Code	Description	Code			
NOVOPRESS	ACO203XL EFP203	1948267181 1948267210	16	U	1936267232	-	-			
			16	TH	1936267223	-	-			
			20	U	1936267233	-	-			
			20	TH	1936267224	-	-			
			25	U	1936267234	-	-			
			25	TH	1936267225	-	-			
			26	TH	1936267226	-	-			
			32	U	1936267235	-	-			
			32	TH	1936267227	-	-			
			40	U	1936267236	-	-			
			40	TH	1936267228	-	-			
			50	[OP]TH	1936267229	ZB203	1948267000			
			63	[OP]TH	1936267230					
			ACO103	1936055004 - "U" 1936055005 - "TH"	16	U	1936267113	-	-	
	16	TH			1936267108	-	-			
	20	U			1936267114	-	-			
	20	TH			1936267109	-	-			
	25	U			1936267115	-	-			
	25	TH			1936121003	-	-			
	26	TH			1936267110	-	-			
	32	U			1936267116	-	-			
	32	TH	1936267111	-	-					
REIMS	Power-Press SE Akku-Press Power-Press ACC Eco Press ¹⁾	1936267160 1936267152 1936267219 1936267174 ¹⁾	16 ¹⁾	U	1936267122	-	-			
			16 ¹⁾	TH	1948267109	-	-			
			20 ¹⁾	U	1936267125	-	-			
			20 ¹⁾	TH	1948267114	-	-			
			25 ¹⁾	U	1936267127	-	-			
			25 ¹⁾	TH	1948267116	-	-			
			26 ¹⁾	U	1936267130	-	-			
			26 ¹⁾	TH	1936267101	-	-			
			32	U	1936267137	-	-			
			32	TH	1936267103	-	-			
			40	U	1936267139	-	-			
			40	TH	1936267105	-	-			
			50	TH	1936267134	-	-			
			63	TH	1936267136	-	-			
			KLAUKE	KAN-therm Mini	1936055008	16	U	1936267273	-	-
						16	TH	1936055015	-	-
20	U	1936267274				-	-			
20	TH	1936055016				-	-			
25	U	1936267275				-	-			
26	U	1936267276				-	-			
26	TH	1936055014				-	-			
32	U	1936267277				-	-			
32	TH	1936055017				-	-			

¹⁾ Limited diameter range - use selected press jaws

To perform a connections in KAN-therm ultraPRESS, other tools available on the market can also be utilized - see the table below.

Size	Manufacturer	Press machine	Jaws/collars	Press profile
16–40 mm	Novopress	Comfort – Line ACO 102 Basic – Line AFP 101	16–40 mm PB1 jaws	
16–63 mm	Novopress	Comfort – Line ECO 202 Comfort – Line ACO 202 Basic – Line EFP 202 Basic – Line AFP 202 Basic – Line EFP 2 adapter ZB 201 adapter ZB 203	16–40 mm PB2 jaws 50–63 mm jaws for adapters	Ø 16–40 mm – U, TH profile Ø 50–63 mm – TH profile
16–20 mm	Klauke	MP20	16–20 mm inserts	
16–32 mm	Klauke	i-press mini MAP2L mini MAP1 AHP700LS PKMAP2 HPU32 MP32	16–32 mm mini jaws 16–32 mm jaws for mini inserts 16–32 mm inserts	Ø 16–40 mm – U profile Ø 16–32 mm – TH profile Ø 63 mm – TH profile Notice: Ø 40–50 mm TH profile (KSP 11) – non-compatible with the KAN-therm system
16–63 mm	Klauke	i-press medium UAP3L UAP2 UNP2 i-press medium UAP4L HPU2 AHP700LS PKUAP3 PKUAP4	16–40 mm tongs 16–32 mm tongs for inserts 40–63 mm tongs for inserts	
16-40 mm	HILTI	NPR 019 IE-A22 NPR 19-22	NPR PM jaws 16-40 mm	16-32 mm – U, TH profile 40 mm – U profile
16-40 mm, 63 mm	HILTI	NPR 032 IE-A22 NPR 32-22 NPR 32 P-22	NPR PS jaws 16-50 mm NPR PR jaws 40-63 mm	16-32 mm – U, TH profile 40 mm – U profile 63 mm – TH profile
16-40 mm, 63 mm	HILTI	NPR 032 PE-A22 NPR 32 XL-22	NPR-PS jaws 16-40 mm NPR PR jaws 63 mm	16-32 mm – U, TH profile 40 mm – U profile 63 mm – TH profile
16–40 mm	REMS	Mini-Press ACC	16–40 mm mini tongs	Ø 16–40 mm – U, TH profile
16–63 mm	REMS	Power-Press E Power-Press 2000 Akku-Press ACC	16–63 mm tongs	Ø 50–63 mm – TH profile
16–40 mm	Rothenberger	Standard Romax 4000 Compact Romax AC/Akku Standard Romax 3000 Akku Romax 3000 AC Romax AC ECO	ONLY KAN-therm jaws	Ø 16–40 mm – profil TH Ø 16–40 mm – profil U

Tools offered by the KAN company available as single elements or in complete sets..

KAN-therm tools:

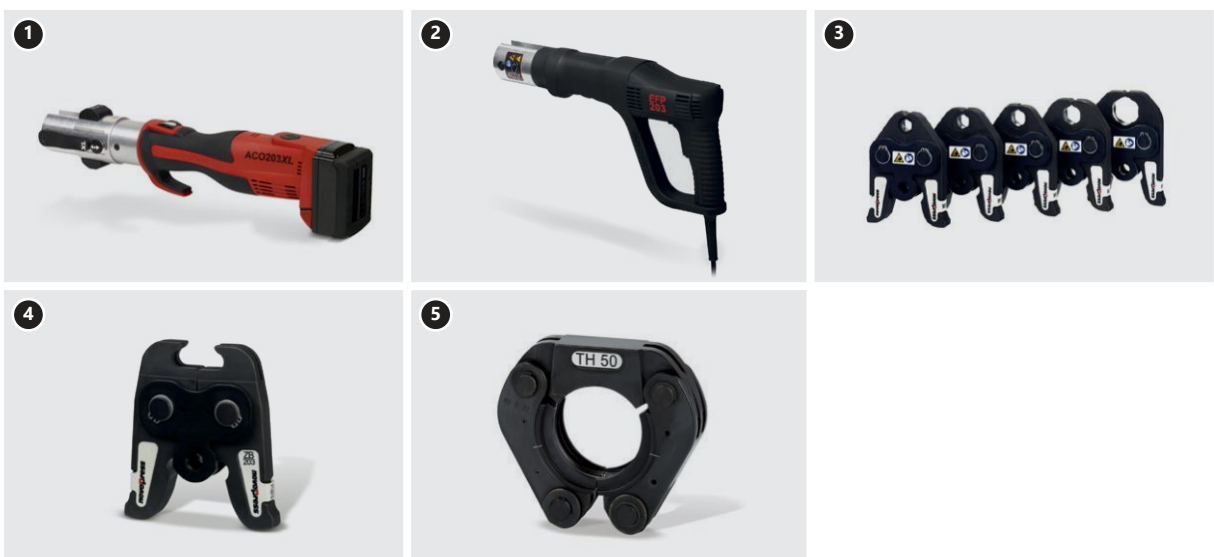


1. Electric press KAN-therm AC 3000
2. Battery-powered press KAN-therm DC 4000
3. „U“ KAN-therm jaws
4. „TH“ KAN-therm jaws
5. „C“ KAN-therm jaws

NOVOPRESS tools:



1. Battery-powered press ACO103
2. PB1 14–32 mm jaws



1. Battery-powered press ACO203XL
2. Electric press EFP203
3. PB2 16–40 mm jaws
4. Adapter ZB203 (50 and 63)
5. Snap On 50 and 63 mm collars

REMS tools:



1. Electric press Power-Press ACC
2. Battery-powered press Akku-Press
3. Electric press Power-Press SE
4. Manual press tool Eco-Press (16–25(26) mm)
5. 16–40 mm jaws
6. 50–63 mm jaws

KLAUKE tools:



1. Battery-powered press KAN-therm Mini
2. SBM U 16–32 mm jaws
3. SBM TH 16–32 mm jaws

! Notice

Depending on the structure of the KAN-therm ultraPRESS fitting and its diameter, the following jaw profiles must be used for pressing:

KAN-therm ultraPRESS fittings:

- „U” or „TH” profile for diameters 16-40 mm.

KAN-therm ultraPRESS fittings:

- „TH” profile – for diameters: 50 and 63 mm.



U profile

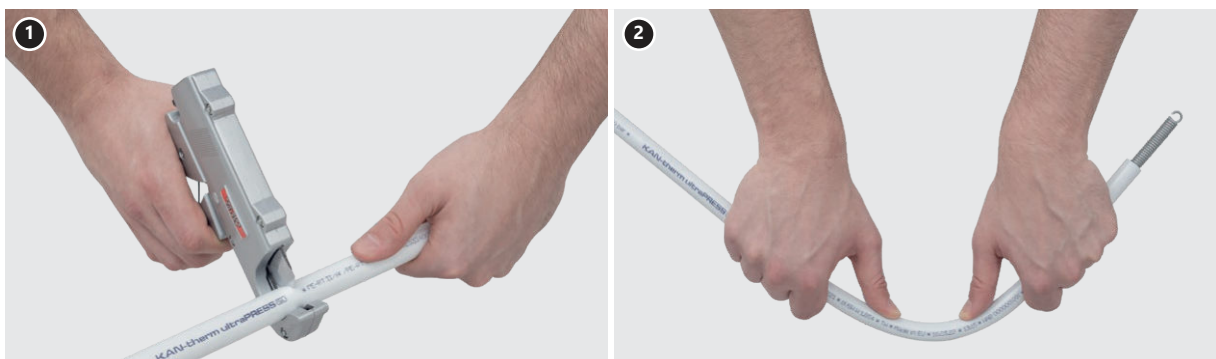


TH profile

! Tools – work safety

Before starting any works, make sure you read the instruction manual and learn the principles of safe work. All tools must be used according to their dedication and the manufacturer's instruction manual. During the use of tools, one must observe the terms of regular inspections and all applicable safety regulations. Using tools against their designed use may lead to their damage or to the damage of accessories and pipes. It may also lead to the occurrence of leakages in installation joints.

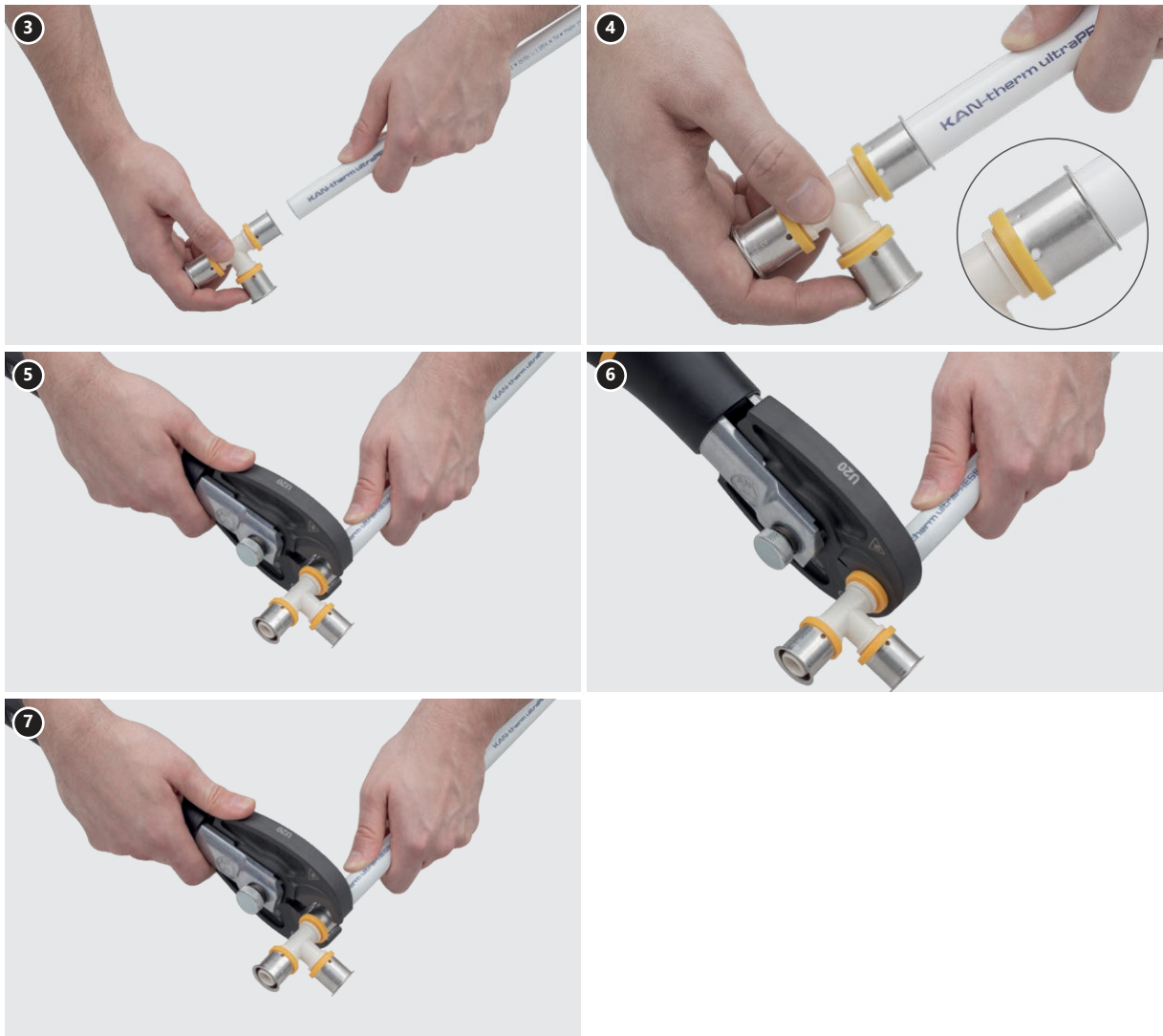
Assembly of KAN-therm ultraPRESS fittings with diameters: 16, 20, 25, 26, 32 and 40 mm



1. Using a pipe cutter for PERTAL pipes or a pipe roller cutter, cut the pipe perpendicularly to its axis at the required length.
Notice! Use only sharp, non-chipped cutting tools.
2. Give the pipe its desired shape. Bend the pipe using an inner or outer spring. Observe the minimum radius $R > 5 De$ requirement. When using mechanic pipe benders for diameters 16 – 20 mm, the minimum radius is $R > 3,5 De$. Execute all bends at a distance of $10 \times De$ from the nearest joint.

In the case of KAN-therm ultraPRESS fittings, (16-32 mm) pipe endings do need not to be chamfered, provided that sharp cutting tools are used and that the pipe is mounted using a proper shape fitting. For bigger diameters (25 and more), we suggest the use of a calibrator to allow the pipe to slide easily onto the stub.

The calibration of the pipe is obligatory for 40 mm diameter.



3. Slide the pipe into the fitting until it stops – axis mount of the pipe on the stub of the fitting is required. Check the depth of the fit – the edge of the pipe must be visible in inspection holes.
4. Check the pipe insertion depth - control holes in steel sleeve should be completely covered by the pipe slid in the fitting.
5. Place the jaws precisely on the stainless steel sleeve between the plastic ring and the collar of the sleeve, perpendicularly to the axis of the stub ("U" type profile). In the case of the "TH" profile, the jaws are positioned on the plastic ring (the ring must be embraced by the external groove of the jaw). In both cases, the structure of the joint makes it impossible for the jaws to slide off in the process of pressing.
6. Start the drive of the press machine and perform the connection. The process of pressing ends when the jaws of the tool completely close on the joint. Fitting may be pressed on a pipe only once.
7. Unlock the jaws and remove the tool from the fitting. The joint is ready for a pressure test



Notice

„Press“ type joints should be executed above ambient temperature of 0 °C. Before starting any works, read the instruction manuals for all tools and learn the principles of safe work.

Assembly of KAN-therm ultraPRESS fittings with diameters 50 and 63 mm



1. Using a pipe cutter for PERTAL pipes or a pipe roller cutter, cut the pipe perpendicularly to its axis at the required length.
2. Calibrate the pipe and chamfer its inner edge using a calibrator. The aluminum layer should remain intact. The edge of the pipe must not have any chips or splinters.
3. Slide the pipe into the fitting until it stops. Check the depth of the joint – the inspection holes must be completely covered by the pipe.
4. Check the pipe insertion depth - control holes in steel sleeve should be completely covered by the pipe slid in the fitting.
5. Place the jaws perpendicularly on the stainless steel sleeve so the jaws are positioned on the transparent plastic ring (the ring must be embraced by the external groove of the jaw). The structure of the joint makes it impossible for the jaws to slide off in the process of pressing.
6. Place the jaw of the press tool on the sleeve so that it contacts the flange of the fitting. The outer edge of the jaw should be pushed against, but not encompass, the fittings flange*. Start the press drive and make the connection. The pressing process continues until the jaws of the tool are completely closed. Pressing the sleeve on the pipe can be done only once.
7. Unlock the jaws and remove the tool from the pressed sleeve. The joint is ready for a pressure test



Notice

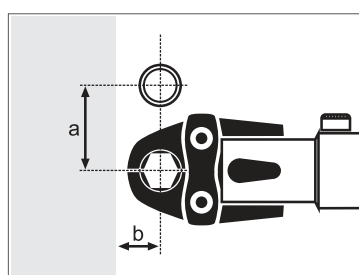
„Press“ type joints should be executed above ambient temperature of 0 °C. Before starting any works, read the instruction manuals for all tools and learn the principles of safe work.

* it concerns old design of the fittings, without transparent basing ring.

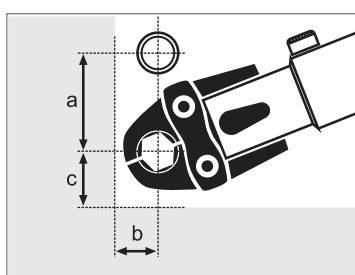
Bending radius of KAN-therm ultraPRESS PERTAL pipes with aluminum layer

Pipe diameter [mm]	Minimal bending radius R_{min} [mm]	
	Bending without tools ($R_{min} \geq 5 \times De$)	Bending with shaping tools ($R_{min} \geq 3,5 \times De$)
16 × 2,0	80	56
20 × 2,0	100	70
25 × 2,5	125	88
26 × 3,0	130	91
32 × 3,0	-	112
40 × 3,5	-	140
50 × 4,0	-	175
63 × 4,5	-	221

Minimum assembly distances



Rys. 1



Rys. 2

Ø [mm]	Pic. 1		Pic. 2		
	a [mm]	b [mm]	a [mm]	b [mm]	c [mm]
16	42	16	58	19	31
20	46	18	58	20	34
25 / 26	53	21	62	23	37
32	62	27	67	27	45
40	72	31	77	31	51
50	100	67	100	67	70
63	128	90	128	100	88

Above table gives indication for REMS 2-segment jaws (16-40 mm) and REMS 4-segment jaws (50-63 mm).

Threaded joints for PERTAL pipes with aluminum layer

Threaded joints for multilayer KAN-therm pipes are executed using two types of fittings:

- “barrel” union adapter (inlet connection),
- eurocone adapter with compression ring.

Threaded fittings (inlet connections)

Fittings of this type are made of brass. Each fitting consists of a body with a stub equipped with two O-Rings (used for fitting pipe ends) and a sealing cone (Eurocone type), as well as a threaded nut. Such joints are compatible with KAN-therm brass fittings with male threads, such as elbows, tees, tap connections with specially formed sockets (for sealing cone threads with O-Rings).

Dimensions of nut threads:

- 1/2" - for diameters 14 and 16,
- 3/4" - for diameters 14, 16 and 20,
- 1" - for diameters 20, 25 and 26.



1. Connection adapter (inlet connection)
2. Fittings with male threads



1. Using a pipe cutter for PERTAL pipes or a pipe roller cutter, cut the pipe perpendicularly to its axis at the required length.
2. Give the pipe its desired shape. Bend the pipe using an inner or outer spring. Observe the minimum radius $R > 5 De$ requirement. When using mechanic pipe benders for diameters 16–20 mm, the minimum radius is $R > 3,5 De$. Execute all bends at a distance of $10 \times De$ from the nearest joint.
3. Calibrate the pipe and chamfer its inner edge using a calibrator. The aluminum layer should remain intact. The edge of the pipe must not have any chips or splinters.
4. Slide the nut onto the pipe. Slide the stub of the fitting into the pipe until it clearly stops. The depth of the joint is c.a. 9 mm for pipes of 16, 20 mm in diameter and 12 mm for pipes of 25 (26) mm in diameter.
5. Slide the fitting and the pipe into the socket of the male fitting until it clearly stops.
6. Screw the nut on the fitting using a wrench.



Particular attention should be paid to the precise placement of the fitting in the socket and tightening the nut. When modernizing an installation, it is possible to disassemble the joint (cut off the used pipe ending). There is, however, no possibility of reusing the inlet connection. Do not place such joints in flooring screeds. They must be located in easily accessible places.

Eurocone adapters

Fittings of this type are made of brass or brass and PPSU. Each fitting consists of a body with a stub equipped with an O-Ring (used for mounting pipe ends), a compression ring and a threaded nut. Such fittings are compatible with KAN-therm brass fittings with male threads, such as elbows, tees, tap connections (9012 series) with specially formed sockets.



1. Universal brass eurocone adapter for KAN-therm system pipes.
2. Eurocone adapter with compression ring for PERT, PEXC and bluePERT pipes.
3. PPSU universal eurocone adapter for KAN-therm pipes.

Mounting the pipe on the stub is performed in an identical way as in the case of the threaded joint (inlet connection) described above. Remember to slide on the compression ring after applying the nut. Then, remember to move the ring towards the edge of the pipe before screwing in the nut. The diameters of pipes connected and corresponding nut dimensions are: $\text{Ø}16 \text{ G}1/2''$, $\text{Ø}16 \text{ G}3/4''$, $\text{Ø}20 \text{ G}3/4''$ (for PERTAL and bluePERTAL pipes) and $\text{Ø}16 \text{ G}3/4''$, $\text{Ø}20 \text{ G}3/4''$ (for PERT, PEXC and bluePERT pipes).

i **When modernizing an installation, it is possible to disassemble the joint (cut off the used pipe ending). There is also a possibility of reusing the eurocone adapter (provided that the ring is replaced with a new one).**

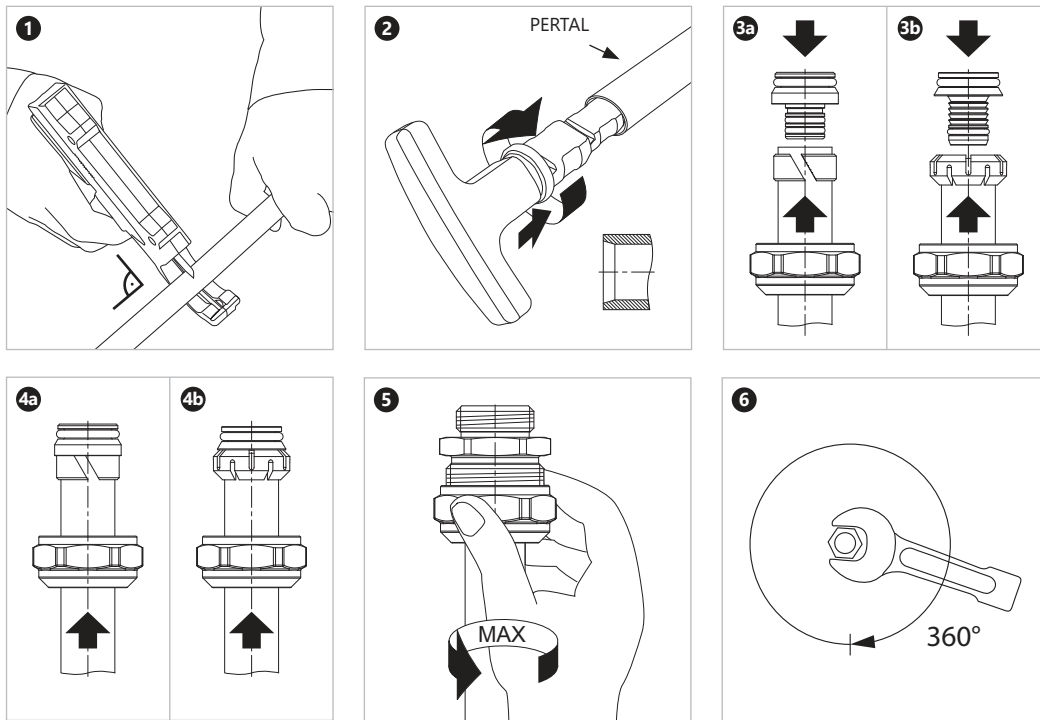
All above mentioned eurocone adapters are compatible with:

- a series of KAN-therm fittings with male threads equipped with Eurocone sockets,
- KAN-therm manifolds equipped with special $1/2''$ and $3/4''$ nipples.

To connect 16×2 mm PERTAL pipes directly to the manifold body (without nipples), use a pressed fitting with a compression ring with $1/2''$ male thread. The thread is equipped with an O-Ring, making additional sealants redundant.



Fitting with $1/2''$ male thread for connecting of 16×2 pipes to manifolds.



1.4 Transport and storage

The elements of KAN-therm ultraPRESS system can be stored in temperatures below 0 °C. If that is a case, secure them against dynamic loads.

They should be protected against mechanical damage during transport. Due to the sensitivity to ultraviolet rays, the pipes should be protected against direct long-term exposure to sunlight, both during storage, transport and assembly. KAN-therm ultraPRESS system elements should be transported by covered means of transport and stored in standard storage facilities in conditions which do not cause deterioration of their quality.

- Do not store in the immediate vicinity of chemicals and sources of ammonia (toilets),
- Do not expose to sunlight (protect from heat and UV radiation),
- Avoid storing near strong heat sources,
- During storage and transport, no contact with sharp objects is allowed,
- Avoid surfaces with sharp edges or loose sharp elements on their surface,
- Do not drag directly on the ground or concrete surface,
- Protect against dirt, mortar, oils, greases, paints, solvents, moisture chemicals, etc.,
- Store and transport in original packaging,
- Remove elements from their original packaging immediately before assembly,
- If it is necessary to cut into insulation already fitted to a pipe (e.g. to fit it around a pipe cutting), take particular care not to damage the surface of the pipe. Use only suitable, sharp tools for cutting, which allow you to make a precise cut through the insulation layer without damaging the pipe material.



Detailed information about storage and transport of components can be found at en.kan-therm.com.

SYSTEM KAN-therm ultraPRESS - assortment

Pipes



PERTAL pipe - coil

GROUP: B



Size [mm]	*	Code			UM
16×2,0		1029196031	600	2400	m
16×2,0		1029196123	200	3000	m
20×2,0		1029196092	100	1500	m
25×2,5		1029196081	50	750	m
26×3,0		1029196106	50	750	m
32×3,0		1029196115	50	600	m
40×3,5		1029196119	25	300	m

Note:
Application class (acc. to ISO 10508) 1-5; 10 bar.



PERTAL pipe - bar

GROUP: B


Size [mm]	*	Code			UM
16×2,0		1029196210	5	50	m
20×2,0		1029196211	5	35	m
25×2,5		1029196212	5	40	m
32×3,0		1029196071	5	40	m
40×3,5		1029196078	5	25	m
50×4,0		1029196274	5	15	m
63×4,5		1029196275	5	5	m

Note:
Application class (acc. to ISO 10508) 1-5; 10 bar.



PERTAL pipe in red insulation 6 mm - coil

GROUP: B

Size [mm]	*	Code			UM
16×2,0		1029195010	50	750	m
N 16×2,0		1029196208	100	900	m
20×2,0		1029195000	50	750	m
25×2,5		1029195002	25	375	m
32×3,0		1029196114	50	300	m

Note:
Application class (acc. to ISO 10508) 1-5; 10 bar.

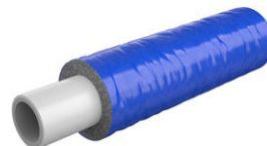
 coil  bar  pipes in tube  bag  carton box  pallet **N** new  available soon

* custom-made - lead time max 4 weeks | ** availability as agreed | *** while stock lasts

PERTAL pipe in blue insulation 6 mm - coil

GROUP: B

Size [mm]	*	Code			UM
16x2,0		1029195011	50	750	m
N 16x2,0		1029196209	100	900	m
20x2,0		1029195001	50	750	m
25x2,5		1029195003	25	375	m
32x3,0		1029196067	50	300	m



Note:

Application class (acc. to ISO 10508) 1-5; 10 bar.

 coil
  bar
  pipes in tube
  bag
  carton box
  pallet
 N new
  available soon

* custom-made - lead time max 4 weeks | ** availability as agreed | *** while stock lasts

Connectors



Brass female connector

GROUP: F

Size [mm]	*	Code			UM
16 Rp1/2"		1009044002	10	120	pc.
20 Rp1/2"		1009042120	10	120	pc.
20 Rp3/4"		1009044003	10	80	pc.
25 Rp3/4"		1009044024	5	50	pc.
25 Rp1"		1009044005	5	40	pc.
26 Rp3/4"		1009044029	5	50	pc.
26 Rp1"		1009044006	5	40	pc.
32 Rp1"		1009044040	5	40	pc.
32 Rp1 1/4"		1009044008	5	40	pc.
40 Rp1"		1009044051	2	20	pc.
40 Rp1 1/4"		1009044050	2	20	pc.
40 Rp1 1/2"		1009044009	2	20	pc.



Brass male connector

GROUP: F

Size [mm]	*	Code			UM
16 R1/2"		1009045005	10	150	pc.
20 R1/2"		1009045009	10	120	pc.
20 R3/4"		1009042128	10	120	pc.
25 R1/2"		1009042132	5	50	pc.
25 R3/4"		1009045014	5	50	pc.
25 R1"		1009045013	5	50	pc.
26 R1/2"		1009042134	5	50	pc.
26 R3/4"		1009045043	5	50	pc.
26 R1"		1009045015	5	50	pc.
32 R1"		1009045017	5	40	pc.
32 R1 1/4"		1009045016	5	40	pc.
40 R1"		1009045061	2	20	pc.
40 R1 1/4"		1009045019	2	20	pc.
40 R1 1/2"		1009045018	2	20	pc.
50 R1 1/2"		1009045020	2	20	pc.
63 R2"		1009045003	1	10	pc.



PPSU female connector

GROUP: F



Size [mm]	*	Code			UM
16 Rp1/2"	***	1009044030	10	120	pc.

coil
 bar
 pipes in tube
 bag
 carton box
 pallet
 new
 available soon

* custom-made - lead time max 4 weeks | ** availability as agreed | *** while stock lasts

Brass connector Compression

GROUP: F

Size [mm]	*	Code			UM
16 / 15		1009042077	10	150	pc.
22 / 20		1009042079	10	80	pc.
25 / 22		1009042082	5	50	pc.



Note:

The coupling can work with metal press systems such as KAN-therm Steel, KAN-therm Inox or KAN-therm Copper.



Brass elbow Compression

GROUP: F

Size [mm]	*	Code			UM
16 / 15	*	1009068018	10	120	pc.



Note:

The coupling can work with metal press systems such as KAN-therm Steel, KAN-therm Inox or KAN-therm Copper.



Brass coupling ultraPRESS/Push



GROUP: F

Size [mm]	*	Code			UM
16 / 14x2,0		1009042146	10	150	pc.
16 / 18x2,0		1009042149	10	150	pc.
16 / 18x2,5		1009042145	10	150	pc.



Brass coupling



GROUP: F

Size [mm]	*	Code			UM
16		1009042042	10	150	pc.
20		1009042049	10	120	pc.
25		1009042055	5	70	pc.
32		1009042003	5	40	pc.
40		1009042004	2	20	pc.
50		1009042005	2	20	pc.
63		1009042022	1	5	pc.



PPSU coupling

GROUP: F



Size [mm]	*	Code			UM
16		1009042013	10	160	pc.
20		1009042015	10	150	pc.
25		1009042017	5	60	pc.
26		1009042039	5	60	pc.





Brass reducing coupling


GROUP: F

Size [mm]	*	Code			UM
20 / 16		1009042105	10	120	pc.
25 / 16		1009042111	5	70	pc.
25 / 20		1009042117	5	70	pc.
32 / 16		1009046075	5	40	pc.
32 / 20		1009046072	5	40	pc.
32 / 25		1009046018	5	40	pc.
32 / 26		1009046046	5	40	pc.
40 / 20		1009046047	2	30	pc.
40 / 25		1009046052	2	30	pc.
40 / 26		1009046054	2	30	pc.
40 / 32		1009046048	2	20	pc.
50 / 32		1009046002	2	20	pc.
50 / 40		1009046004	2	20	pc.
63 / 40		1009046007	1	10	pc.
63 / 50		1009046008	1	10	pc.



PPSU reducing coupling

GROUP: F

Size [mm]	*	Code			UM
20 / 16		1009046026	10	120	pc.
25 / 16		1009046029	5	70	pc.
25 / 20		1009046032	5	70	pc.
26 / 16		1009046040	5	70	pc.
26 / 20		1009046045	5	70	pc.





Brass female tee

GROUP: F

Size [mm]	*	Code			UM
16 Rp $\frac{1}{2}$ "		1009258000	5	60	pc.
20 Rp $\frac{1}{2}$ "		1009258001	5	50	pc.
20 Rp $\frac{3}{4}$ "		1009258011	5	50	pc.
25 Rp $\frac{1}{2}$ "		1009258029	2	30	pc.
25 Rp $\frac{3}{4}$ "		1009258002	2	30	pc.
26 Rp $\frac{1}{2}$ "		1009258034	2	30	pc.
26 Rp $\frac{3}{4}$ "		1009258036	2	30	pc.
32 Rp $\frac{1}{2}$ "		1009257279	2	20	pc.
32 Rp $\frac{3}{4}$ "		1009257262	2	20	pc.

Brass male tee



GROUP: F

Size [mm]	*	Code			UM
16 R1/2"		1009259000	5	60	pc.
20 R1/2"		1009259027	5	30	pc.
20 R3/4"		1009259001	5	50	pc.
25 R3/4"		1009259037	2	30	pc.
25 R1"		1009259002	2	30	pc.
26 R3/4"		1009259043	2	30	pc.
26 R1"		1009259040	2	30	pc.
32 R1"		1009259046	2	20	pc.
40 R1"		1009259003	1	10	pc.
50 G1"	**	1009259006	1	12	pc.
63 G1"	**	1009259010	1	5	pc.



Brass tee



GROUP: F

Size [mm]	*	Code			UM
16		1009257129	10	80	pc.
20		1009257144	5	50	pc.
25		1009257152	2	30	pc.
N 32		1009257305	2	20	pc.



PPSU tee

GROUP: F

Size [mm]	*	Code			UM
16		1009257007	10	80	pc.
20		1009257009	5	50	pc.
25		1009257010	2	30	pc.
26		1009257016	2	30	pc.
32		1009257020	2	20	pc.
40		1009257023	1	10	pc.
50		1009257027	1	6	pc.
63		1009257029	1	3	pc.





Brass reducing tee

GROUP: F



Size [mm]	*	Code			UM
20 / 16 / 16		1009257205	5	60	pc.
20 / 16 / 20		1009260167	5	50	pc.
20 / 20 / 16		1009257217	5	50	pc.
20 / 25 / 20		1009260164	2	30	pc.
25 / 16 / 20		1009260160	5	50	pc.
25 / 16 / 25		1009260161	2	30	pc.
25 / 20 / 16		1009260166	5	50	pc.
25 / 20 / 20		1009260162	2	30	pc.
25 / 20 / 25		1009260163	2	30	pc.
25 / 25 / 20		1009260165	2	30	pc.
N 32 / 20 / 32		1009260294	2	20	pc.
N 32 / 25 / 25		1009260296	2	20	pc.
N 32 / 25 / 32		1009260295	2	20	pc.
50 / 20 / 50		1009260168	1	10	pc.
50 / 25 / 40		1009260172	1	10	pc.
50 / 25 / 50		1009260169	1	10	pc.
50 / 26 / 40		1009260182	1	10	pc.
50 / 26 / 50		1009260069	1	10	pc.
50 / 32 / 40		1009260170	1	10	pc.
50 / 32 / 50		1009260171	1	10	pc.
50 / 40 / 40		1009260174	1	10	pc.
50 / 40 / 50		1009260173	1	8	pc.
63 / 20 / 63		1009260175	1	5	pc.
63 / 25 / 63		1009260176	1	5	pc.
63 / 26 / 63		1009260183	1	5	pc.
63 / 32 / 50		1009260177	1	5	pc.
63 / 32 / 63		1009260178	1	5	pc.
63 / 40 / 50		1009260179	1	5	pc.
63 / 40 / 63		1009260097	1	5	pc.
63 / 50 / 50		1009260181	1	5	pc.
63 / 50 / 63		1009260180	1	5	pc.

 coil
  bar
  pipes in tube
  bag
  carton box
  pallet
 N new
  available soon

* custom-made - lead time max 4 weeks | ** availability as agreed | *** while stock lasts

PPSU reducing tee

GROUP: F

Size [mm]	*	Code			UM
16 / 20 / 16		1009260189	5	60	pc.
20 / 16 / 16		1009260184	5	60	pc.
20 / 16 / 20		1009260185	5	50	pc.
20 / 20 / 16		1009260188	5	50	pc.
20 / 25 / 20		1009260190	2	30	pc.
20 / 26 / 20		1009260007	2	30	pc.
25 / 16 / 20		1009260186	5	50	pc.
25 / 16 / 25		1009260187	2	30	pc.
25 / 20 / 16		1009257106	5	50	pc.
25 / 20 / 20		1009260010	2	30	pc.
25 / 20 / 25		1009260000	2	30	pc.
25 / 25 / 20		1009260009	2	30	pc.
25 / 32 / 25		1009257063	2	20	pc.
26 / 16 / 20		1009257014	5	50	pc.
26 / 16 / 26		1009257015	2	30	pc.
26 / 20 / 16		1009257113	5	50	pc.
26 / 20 / 20		1009260019	2	30	pc.
26 / 20 / 26		1009260022	2	30	pc.
26 / 26 / 20		1009260026	2	30	pc.
26 / 32 / 26		1009257066	2	20	pc.
32 / 16 / 32		1009260191	2	20	pc.
32 / 20 / 25		1009260027	2	20	pc.
32 / 20 / 26		1009257021	2	20	pc.
32 / 20 / 32		1009260192	2	20	pc.
32 / 25 / 25		1009260032	2	20	pc.
32 / 25 / 32		1009260035	2	20	pc.
32 / 26 / 26		1009260038	2	20	pc.
32 / 26 / 32		1009260129	2	20	pc.
32 / 32 / 20		1009260102	2	20	pc.
32 / 32 / 25		1009257073	2	20	pc.
32 / 32 / 26		1009257076	2	20	pc.
40 / 20 / 32		1009260041	1	12	pc.
40 / 20 / 40		1009260042	2	12	pc.
40 / 25 / 32		1009260043	2	12	pc.
40 / 25 / 40		1009260044	2	12	pc.
40 / 26 / 32		1009260001	2	12	pc.
40 / 26 / 40		1009260045	2	12	pc.
40 / 32 / 32		1009260048	2	12	pc.
40 / 32 / 40		1009260193	1	10	pc.
40 / 40 / 32		1009260049	1	10	pc.



 coil
  bar
  pipes in tube
  bag
  carton box
  pallet
  new
  available soon

* custom-made - lead time max 4 weeks | ** availability as agreed | *** while stock lasts



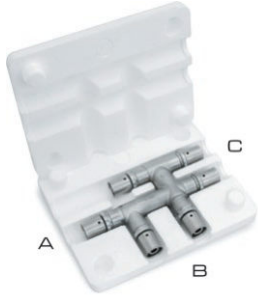
Nickel-plated brass crossover tee

GROUP: F

Size [mm]	*	Code			UM
16		1009257043	1	4	pc.
20		1009257045	1	4	pc.

Note:

Press brass crossover tee - nickel-plated version.
 Styrofoam box dimensions: height = 150 mm, length = 190 mm, width = 40 mm.



Nickel-plated brass crossover reducing tee

GROUP: F

Size [mm]	*	Code			UM
16 / 16 / 20		1009257048	1	4	pc.
20 / 16 / 16		1009257044	1	4	pc.
20 / 16 / 20		1009257051	1	4	pc.

Note:

Press brass crossover tee - nickel-plated version.
 Styrofoam box dimensions: height = 150 mm, length = 190 mm, width = 40 mm.



Brass elbow 90°

GROUP: F

Size [mm]	*	Code			UM
16		1009068054	10	120	pc.
20		1009068060	10	80	pc.
25		1009068066	5	40	pc.
N 32		1009068112	2	30	pc.



PPSU elbow 90°

GROUP: F

Size [mm]	*	Code			UM
16		1009068007	10	120	pc.
20		1009068010	10	80	pc.
25		1009068030	5	40	pc.
26		1009068034	5	40	pc.
32		1009068020	2	30	pc.
40		1009068011	2	20	pc.
50		1009068048	2	10	pc.
63		1009068050	1	4	pc.

Brass female elbow 90°


GROUP: F

Size [mm]	*	Code			UM
16 Rp½"		1009069005	10	120	pc.
20 Rp½"		1009069008	10	100	pc.
20 Rp¾"		1009069011	5	60	pc.
25 Rp¾"		1009068029	5	30	pc.
25 Rp1"		1009069016	5	30	pc.
26 Rp¾"		1009069018	5	30	pc.
26 Rp1"		1009069020	5	30	pc.
32 Rp1"		1009069022	2	30	pc.
40 Rp1¼"		1009069012	2	20	pc.



Brass male elbow 90°



GROUP: F

Size [mm]	*	Code			UM
16 R½"		1009068000	10	120	pc.
20 R½"		1009070010	10	100	pc.
20 R¾"		1009070013	10	100	pc.
25 R¾"		1009070005	5	40	pc.
25 R1"		1009070022	5	40	pc.
26 R¾"		1009070026	5	40	pc.
26 R1"		1009070016	5	40	pc.
32 R1"		1009070018	2	30	pc.
40 R1¼"		1009070029	2	20	pc.



PPSU elbow 45°



GROUP: F

Size [mm]	*	Code			UM
32		1009068003	2	30	pc.
40		1009068028	2	20	pc.
50		1009068040	1	10	pc.
63		1009068041	1	4	pc.

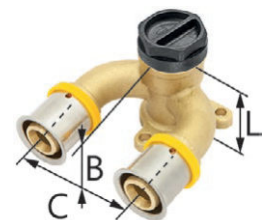


Brass female directly fixed U type wallplate tee - L = 41 mm

GROUP: F



Size [mm]	*	Code			UM
16 Rp½"		1009285101	5	25	pc.
20 Rp½"		1009285102	5	25	pc.

Note:
Size B = 20,5 mm. Size C = 50 mm.
The plastic stop end is intended only for the leak test of the installation.



Acoustic guard for U type wallplate tee

GROUP: F

Size [mm]	*	Code			UM
16-20		1009183004	5	25	pc.



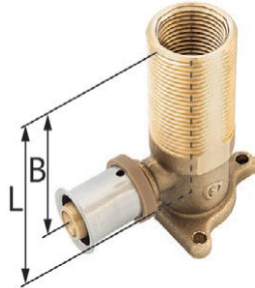


**Brass female/male directly fixed wallplate elbow for drywall,
L = 78 mm**

GROUP: F

Size [mm]	*	Code			UM
16 Rp½"		1009285029	2	20	pc.

Size B = 57 mm.

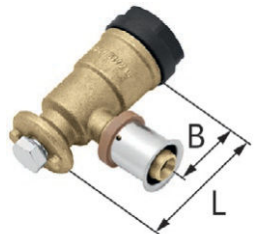


**Brass female/male directly fixed wallplate elbow for drywall,
L = 78 mm**

GROUP: F

Size [mm]	*	Code			UM
16 G½" / G¾"		1009285055	2	20	pc.

Size B = 57 mm.



Brass female wallplate elbow - L = 52,5 mm

GROUP: F

Size [mm]	*	Code			UM
16 Rp½"		1009285009	5	40	pc.
20 Rp½"		1009285001	5	40	pc.

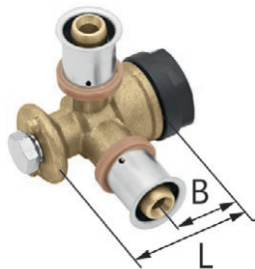
Note:

Size B = 31,5 mm.

The wallplate elbow is sold in a set with a mounting bolt and plastic stop end.

The stop end is intended only for the leak test of the installation.

It can be used in drywall with metal plates.



Brass angular female wallplate tee - L = 41 mm

GROUP: F

Size [mm]	*	Code			UM
16 Rp½"		1009285017	5	40	pc.
20 Rp½"		1009285040	5	40	pc.

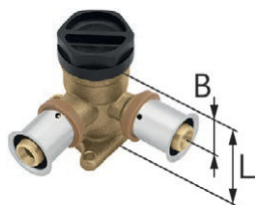
Note:

Size B = 20 mm.

The wallplate elbow is sold in a set with a mounting bolt and plastic stop end.

The stop end is intended only for the leak test of the installation.

It can be used in drywall with metal plates.



Brass female directly fixed angular wallplate tee - L = 41 mm

GROUP: F

Size [mm]	*	Code			UM
16 Rp½"		1009285077	5	50	pc.
20 Rp½"		1009285082	5	40	pc.

Note:



Size B = 20 mm.

The angular wallplate tee is sold in a set with a mounting bolt and plastic stop end.

The plastic stop end is intended only for the leak test of the installation.

Brass female directly fixed wallplate elbow - L = 41 mm

GROUP: F

Size [mm]	*	Code			UM
16 Rp $\frac{1}{2}$ "		1009285059	5	50	pc.
20 Rp $\frac{1}{2}$ "		1009285062	5	50	pc.


Note:

Size B = 20 mm.
The wallplate elbow is sold in a set with a plastic stop end.
The plastic stop end is intended only for the leak test of the installation.



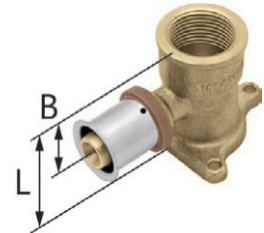
Brass female directly fixed wallplate elbow - L = 54 mm

GROUP: F

Size [mm]	*	Code			UM
20 Rp $\frac{3}{4}$ "		1009285032	5	50	pc.
25 Rp $\frac{3}{4}$ "	***	1009285050	2	30	pc.
26 Rp $\frac{3}{4}$ "		1009285053	2	30	pc.



Note:

Size B = 30 mm.
Wallplate elbow is sold without the plastic stop end.






Acoustic guard for wallplate elbows

GROUP: F

Size [mm]	*	Code			UM
16-20		1009183002	5	25	pc.



Note:

Use only with wallplate elbows and tees with a bracket:
 1009285059,
 1009285062,
 1009285032.



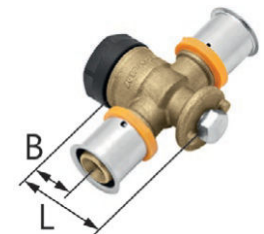
Brass female straight wallplate tee - L = 41 mm

GROUP: F

Size [mm]	*	Code			UM
20 Rp $\frac{1}{2}$ "		1009285056	5	50	pc.



Note:

Size B = 20 mm.
The straight wallplate tee is sold in a set with a mounting bolt and plastic stop end.
The plastic stop end is intended only for the leak test of the installation.
It can be used in drywall with metal plates.



Brass female directly fixed straight wallplate tee - L = 41 mm

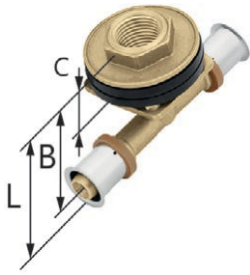
GROUP: F

Size [mm]	*	Code			UM
20 Rp $\frac{1}{2}$ "		1009285057	5	40	pc.

Note:

Size B = 20 mm.
The straight wallplate tee is sold in a set with a mounting bolt and plastic stop end.
The plastic stop end is intended only for the leak test of the installation.



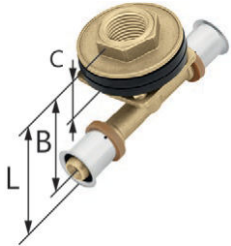


Brass female drywall tee - L = 53 mm

GROUP: F

Size [mm]	*	Code			UM
16 Rp1/2"		1009258012	2	20	pc.
20 Rp1/2"		1009258018	2	20	pc.

Note:
1009258012: Size B = 62 mm, size C = 24 mm.
1009258018: Size B = 62 mm, size C = 24 mm.

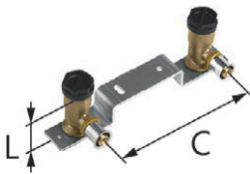


Brass female drywall reducing tee - L = 53 mm

GROUP: F

Size [mm]	*	Code			UM
20 / 16 Rp1/2"		1009258017	2	20	pc.

Note:
Size B = 62 mm.
Size C = 24 mm.



Brass female wallplate elbow set on mounting plate - L = 44 mm

GROUP: F

Size [mm]	*	Code			UM
16 Rp1/2"		1009285000	1	10	pc.

Note:
Plate length = 210 mm. Size C = 153 mm.
Wallplate elbows are sold in a set with a mounting bolt, plastic stop end and metal plate with crossover.
The plastic stop end is intended only for the leak test of the installation.
Option to use in drywall.



Brass nipple coupling


GROUP: F

Size [mm]	*	Code			UM
16 / 12	*	1009042063	20	160	pc.
16 / 15		1009042061	20	160	pc.
20 / 18		1009042214	10	120	pc.
20 / 22		1009042064	10	120	pc.
25 / 22		1009042065	5	60	pc.
25 / 28		1009042139	5	60	pc.
26 / 22		1009042141	5	60	pc.
26 / 28		1009042143	5	60	pc.
N 32 / 28		1009042202	5	40	pc.

Note:
The coupling can work with metal press systems such as KAN-therm Steel, KAN-therm Inox or KAN-therm Copper.

Brass tee with Cu Ø15 pipe - L = 300 mm

GROUP: F

Size [mm]	*	Code		UM
16		1009257115	40	pc.
20		1009261004	30	pc.


Note:

When connecting radiators via a straight tee, use a set of two tees.
Variants of connecting fittings with nickel-plated pipes with all kinds of appliances are described in the "Designer and Contractor Guidebook".



Brass elbow with Cu Ø15 pipe - L = 210 mm

GROUP: F

Size [mm]	*	Code		UM
16		1009068001	40	pc.


Note:

Variants of connecting fittings with nickel-plated pipes with all kinds of appliances are described in the "Designer and Contractor Guidebook".



Brass elbow with Cu Ø15 pipe - L = 300 mm

GROUP: F

Size [mm]	*	Code		UM
16		1009071006	40	pc.


Note:

Variants of connecting fittings with nickel-plated pipes with all kinds of appliances are described in the "Designer and Contractor Guidebook".



Brass elbow with Cu Ø15 pipe - L = 750 mm

GROUP: F

Size [mm]	*	Code		UM
16		1009071009	25	pc.


Note:

Variants of connecting fittings with nickel-plated pipes with all kinds of appliances are described in the "Designer and Contractor Guidebook".



Brass double elbow with Cu Ø15 pipe - L = 250 mm

GROUP: F

Size [mm]	*	Code		UM
16		1009068002	15	pc.


Note:

Variants of connecting fittings with nickel-plated pipes with all kinds of appliances are described in the "Designer and Contractor Guidebook".



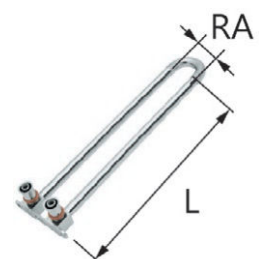
Brass double elbow with Cu Ø15 pipe - L = 300 mm

GROUP: F

Size [mm]	*	Code		UM
16		1009071014	10	pc.

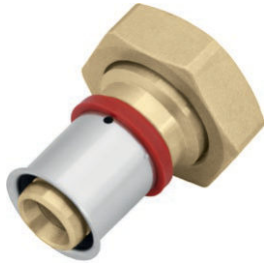
Note:

Variants of connecting fittings with nickel-plated pipes with all kinds of appliances are described in the "Designer and Contractor Guidebook".



 coil  bar  pipes in tube  bag  carton box  pallet  new  available soon

* custom-made - lead time max 4 weeks | ** availability as agreed | *** while stock lasts



Brass female half union with flat sealing

GROUP: F

Size [mm]	*	Code			UM
16 G1/2"		1009105000	10	120	pc.
16 G3/4"		1009105002	10	120	pc.
20 G3/4"		1009105006	10	80	pc.
20 G1"		1009105004	5	60	pc.
25 G3/4"		1009105011	5	60	pc.
25 G1"		1009105009	5	60	pc.
25 G1 1/4"		1009105008	5	50	pc.
26 G3/4"		1009105016	5	60	pc.
26 G1"		1009105014	5	60	pc.
26 G1 1/4"		1009105013	5	50	pc.
32 G1"		1009105021	5	50	pc.
32 G1 1/4"		1009105019	5	40	pc.
32 G1 1/2"		1009105018	5	40	pc.
40 G1 1/2"		1009271000	2	30	pc.
40 G2"		1009271002	2	30	pc.

Note:

Do not use for connections with manifold nipples.



Brass female Eurocone adapter

GROUP: F

Size [mm]	*	Code			UM
16 G3/4"		1009271013	10	120	pc.
32 G1"		1009271009	5	50	pc.



Brass stop end

GROUP: F

Size [mm]	*	Code			UM
16		1009250001	10	200	pc.
20		1009250002	10	140	pc.
25		1009250003	5	100	pc.
26		1009250004	5	100	pc.
32		1009250005	5	50	pc.



PPSU female universal eurocone adapter

GROUP: A

Size [mm]	*	Code			UM
16 G3/4"		1010271005	10	150	pc.

Note:

The adapter works with PEXC, PERT, PERTAL, bluePERT, bluPERTAL pipes.

Brass female universal eurocone adapter

GROUP: A

Size [mm]	*	Code			UM
16 G½"		1010271001	10	160	pc.
16 G¾"		1010271002	10	150	pc.
20 G¾"		1010271008	10	120	pc.



Note:

Adapters are compatible with fittings for adapter connections, manifolds through manifold nipples.
The adapter works with KAN-therm pipes: PEXC, PERT, PERTAL, bluePERT, bluePERTAL.



Brass female inlet connection for PERTAL pipes

GROUP: A

Size [mm]	*	Code			UM
16 G½"		1010040003	10	160	pc.
16 G¾"		1010040006	10	120	pc.
20 G¾"		1010040011	10	120	pc.
20 G1"	***	1010040008	5	80	pc.
25 G1"		1010040013	10	80	pc.
26 G1"	***	1010040015	5	80	pc.



Note:

The above elements are available as nickel-plated on special request (delivery time - 2 weeks).



Threaded male brass connector for PERTAL pipes

GROUP: A

Size [mm]	*	Code			UM
16×2 G½"		1010045000	10	150	pc.
16×2 G¾"		1010045001	10	150	pc.

Note:

This fitting is adapted for direct screwing into the manifold beam - sealing of the connection in the manifold is done by means of an O-Ring seal.



Accessories



Single plastic mounting plate

GROUP: A

	*	Code			UM
		1700210011	10	160	pc.

Note:

Total length 59 mm, width 43 mm, depth 8 mm.
It makes it possible to install wallplate elbows and tees with a bolt or nut on a wall or in wall grooves.
Do not use in drywall.



Double plastic mounting plate

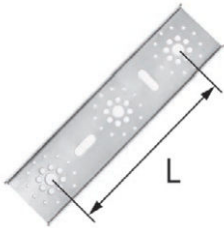
GROUP: A

Spacing (L) [mm]	*	Code			UM
50		1700210008	10	120	pc.
80		1700210010	10	100	pc.
150		1700210006	10	70	pc.

Plate 50 mm - total length 84 mm, width 43 mm, depth 8 mm.
Plate 80 mm - total length 114 mm, width 43 mm, depth 8 mm.
Plate 150 mm - total length 184 mm, width 43 mm, depth 8 mm.

Note:

It makes it possible to install wallplate elbows and tees with a bolt or nut on a wall or in wall grooves.
Do not use in drywall.



Double metal mounting plate

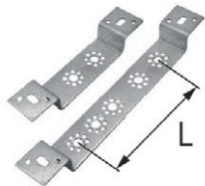
GROUP: A

Spacing (L) [mm]	*	Code			UM
80, 150		1700210014	1	42	pc.

Plate total length 210 mm, width 55 mm, depth 9 mm.

Note:

It allows wall elbows and wall tees with a nut or mounting bolt to be installed on the wall, in wall grooves and drywall.
Screws for mounting tap connections included (6 pcs.).



Double metal bent mounting plate

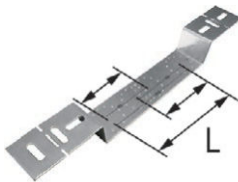
GROUP: A

Spacing (L) [mm]	*	Code			UM
50, 80, 150		1700210002	10	20	pc.
50		1700210013	10	80	pc.

Plate 50, 80, 150 mm - total length 290 mm, width 40 mm, depth 28 mm.
Plate 50 mm - total length 190 mm, width 40 mm, depth 28 mm.

Note:

It makes it possible to install wallplate elbows and tees with a bolt or nut on a wall, in wall grooves and drywall.



Metal bent mounting plate for dry screed wallplate elbows

GROUP: A

Spacing (L) [mm]	*	Code			UM
80, 100, 150		1700210025	1	30	pc.

Plate total length 436 mm, width 60 mm, bend 42 mm.

Note:

It allows wall elbows and wall tees to be installed with a bracket on the wall, in wall grooves and drywall.
The plate is sold with a set of screws (6 pcs.) for fixing elbows and wall tees.

coil bar pipes in tube bag carton box pallet new available soon

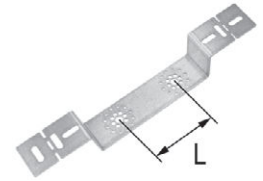
* custom-made - lead time max 4 weeks | ** availability as agreed | *** while stock lasts

Bent mounting plate

GROUP: A

Spacing (L) [mm]	*	Code			UM
N 100		1700210027	1	30	pc.

Plate total length 383 mm, width 60 mm, bend 42 mm.
The plate is sold with a set of screws (6 pcs.) for fixing elbows and wall tees.



 coil  bar  pipes in tube  bag  carton box  pallet **N** new  available soon

* custom-made - lead time max 4 weeks | ** availability as agreed | *** while stock lasts

Tools



Pipe cutter for PERTAL pipes

GROUP: K

Range [mm]	*	Code		UM
14-32		1936267054	1	pc.



Pipe cutter blade for PERTAL pipe

GROUP: K

Range [mm]	*	Code		UM
14-32		1936267059	1	pc.



Roller cutter for PERTAL pipes

GROUP: K

Range [mm]	*	Code		UM
16-63		1936267056	1	pc.



Cutting wheel for PERTAL pipes

GROUP: K

Range [mm]	*	Code		UM
16-63		1941267039	1	pc.



Calibrator for PERTAL pipes

GROUP: K


Size [mm]	*	Code		UM
16		1936267026	1	pc.
20		1936267028	1	pc.
25 / 26		1936267030	1	pc.

coil
 bar
 pipes in tube
 bag
 carton box
 pallet
 new
 available soon

* custom-made - lead time max 4 weeks | ** availability as agreed | *** while stock lasts

Universal calibrator for PERTAL pipes

GROUP: K

Size [mm]	*	Code		UM
16 / 20 / 25 / 26		1936267044	1	pc.
25 / 26 / 32 / 40		1936267039	1	pc.
50 / 63	*	1936267046	1	pc.



Tool set - KAN-therm Mini battery press tool + "U" profile jaws

GROUP: K

Range [mm]	*	Code		UM
16-32		1936055010	1	pc.


Each set includes:

- 1936055008 - KAN-therm Mini battery press tool - 1 pc.,
- 1936267273 - jaws U16 - 1 pc.,
- 1936267274 - jaws U20 - 1 pc.,
- 1936267275 - jaws U25 - 1 pc.,
- 1936267277 - jaws U32 - 1 pc.,
- 1967267051 - battery RAML1225 Li-Ion 10,8 V 2,5 A - 2 pc.,
- 1967267024 - charger LGML1 ~230 V 35 W - 1 pc.,
- case 1 pc.



Tool set - KAN-therm Mini press tool + "TH" type jaws

GROUP: K

Range [mm]	*	Code		UM
16-32		1936055012	1	1 pc.


Each set includes:

- 1936055008 - KAN-therm Mini battery press tool - 1 pc.,
- 1936055015 - jaws TH16 - 1 pc.,
- 1936055016 - jaws TH20 - 1 pc.,
- 1936055014 - jaws TH26 - 1 pc.,
- 1936055017 - jaws TH32 - 1 pc.,
- 1967267051 - battery RAML1 10,8 V Li-Ion 1,5 Ah - 2 pc.,
- 1967267024 - charger LGML1 ~230V 35W - 1 pc.,
- case - 1 pc.



KAN-therm AC 3000 electric press tool

GROUP: K

Range [mm]	*	Code		UM
16-40		1936267239	1	pc.


Note:

The press tool is sold in a case.



KAN-therm DC 4000 battery press tool

GROUP: K

Range [mm]	*	Code		UM
16-40		1936267238	1	pc.


Note:

The press tool is sold with a battery, charger and case.



Charger for KAN-therm DC 4000 battery press tool

GROUP: K

Version	*	Code		UM
10,8-36 V		1936267267	1	pc.



 coil  bar  pipes in tube  bag  carton box  pallet **N** new  available soon

* custom-made - lead time max 4 weeks | ** availability as agreed | *** while stock lasts



Battery for KAN-therm DC 4000 press tool

GROUP: K

Version	*	Code		UM
N 18 V / 4 Ah		1936267266	1	pc.



KAN-therm "U" profile press jaws

GROUP: K

Size [mm]	*	Code		UM
N 16		1936267257	1	pc.
N 20		1936267258	1	pc.
N 25		1936267259	1	pc.
N 26		1936267245	1	pc.
N 32		1936267260	1	pc.
N 40		1936267261	1	pc.

Note:
The jaws work with KAN-therm: AC 3000, DC 4000 drives.



KAN-therm "TH" profile press jaws

GROUP: K

Size [mm]	*	Code		UM
N 16		1936267241	1	pc.
N 20		1936267242	1	pc.
N 25		1936267271	1	pc.
N 26		1936267243	1	pc.
N 32		1936267244	1	pc.
N 40		1936267272	1	pc.

Note:
The jaws work with KAN-therm: AC 3000, DC 4000 drives.



REMS Eco-Press press tool


GROUP: K

Range [mm]	*	Code		UM
14-26		1936267174	1	pc.

Note:
Manual press tool is intended for making pipe connections of Ø14, Ø16, Ø20, Ø25, Ø26 mm in diameter.

REMS "U" profile press jaws

GROUP: K

Size [mm]	*	Code		UM
14	*	1936267220	1	pc.
16		1936267122	1	pc.
20		1936267125	1	pc.
25		1936267127	1	pc.
26		1936267130	1	pc.
32		1936267137	1	pc.
40		1936267139	1	pc.


Note:

The jaws work with Power-Press SE, Akku-Press, Power-Press ACC, Eco-Press (14-26 mm) drives.



REMS "TH" profile press jaws

GROUP: K

Size [mm]	*	Code		UM
14	*	1948267107	1	pc.
16	*	1948267109	1	pc.
20	*	1948267114	1	pc.
25	*	1948267116	1	pc.
26	*	1936267101	1	pc.
32	*	1936267103	1	pc.
40	*	1936267105	1	pc.


Note:

The jaws work with Power-Press SE, Akku-Press, Power-Press ACC, Eco-Press (14-26 mm) drives.



REMS "TH" profile press jaws

GROUP: K

Size [mm]	*	Code		UM
50	*	1936267134	1	pc.
63	*	1936267136	1	pc.


Note:

The jaws work with Power-Press SE, Akku-Press, Power-Press ACC drives.



Case for Eco-Press tool

GROUP: K

	*	Code		UM
	*	1941267135	1	pc.



 coil
  bar
  pipes in tube
  bag
  carton box
  pallet
  new
  available soon

* custom-made - lead time max 4 weeks | ** availability as agreed | *** while stock lasts



Tool set

GROUP: K

Range [mm]	*	Code		UM
16-26		1936267217	1	set

Note:

The press tool is sold with a case.

Each set includes:

- 1936267174 - manual press tool, separated, for Press connectors with a pressed sleeve,
- 1936267122 - jaws U16 for a press tool,
- 1936267125 - jaws U20 for a press tool,
- 1936267130 - jaws U26 for a press tool,
- 1936267054 - pipe cutter for PERTAL pipes,
- 1936267044 - calibrator for PERTAL pipes Ø16/Ø20/Ø25-26,
- 1941267135 - case for press tool REMS Eco-Press.



Tool set

GROUP: K

Range [mm]	*	Code		UM
16-25	N	1938267158	1	set

Note:

The press tool is sold with a case.

Each set includes:

- 1936267174 - manual press tool, separated, for Press connectors with a pressed sleeve,
- 1936267122 - jaws U16 for a press tool,
- 1936267125 - jaws U20 for a press tool,
- 1936267127 - jaws U25 for a press tool,
- 1936267054 - pipe cutter for PERTAL pipes,
- 1936267044 - calibrator for PERTAL pipes Ø16/Ø20/Ø25-26,
- 1941267135 - case for press tool REMS Eco-Press.



Tool set LIGHT

GROUP: K

Range [mm]	*	Code		UM
16-20		1936267218	1	pc.

Note:

The press tool is sold with a case (1941267135).

Each set includes:

- 1936267174 - manual press tool, separated, for Press connectors with a pressed sleeve,
- 1936267122 - jaws U16 for a press tool,
- 1936267125 - jaws U20 for a press tool,
- 1936267026 - calibrator for PERTAL pipes Ø16,
- 1936267028 - calibrator for PERTAL pipes Ø20,

The set covers diameters 16-20 mm.



Case for additional Press tools

GROUP: K

	*	Code		UM
		1941267129	1	pc.



Set of additional Press tools

GROUP: K

Range [mm]	*	Code		UM
16-63		1936267216	1	set

Each set includes:

- 1936267044 - calibrator for PERTAL pipes Ø16, Ø20, Ø25-26 - 1 pc.,
- 1936267039 - calibrator for PERTAL pipes Ø25-26, Ø32, Ø40 - 1 pc.,
- 1936267046 - calibrator for PERTAL pipes Ø50, Ø63 - 1 pc.,
- 1936267056 - cutter for PERTAL pipes Ø16-63 - 1 pc.,
- 1936267054 - shears for PERTAL pipes Ø14-32 - 1 pc.,
- 1941267129 - case - 1 pc.

Set of REMS "TH" profile press jaws

GROUP: K

Range [mm]	*	Code		UM
50-63		1936267215	1	set

Each set includes:


- 1936267134 - jaws TH50 for press tool - 1 pc.,
- 1936267136 - jaws TH63 for press tool - 1 pc.,
- case - 1 pc.

The jaws work with Power-Press SE, Akku-Press, Power-Press ACC drives.



REMS Power-Press SE "U" profile press tool set

GROUP: K

Range [mm]	*	Code		UM
16-40		1936267167	1	set

Each set includes:

- 1936267160 - electric press tool - 1 pc.,
- 1936267122 - jaws U16 for press tool - 1 pc.,
- 1936267125 - jaws U20 for press tool - 1 pc.,
- 1936267127 - jaws U25 for press tool - 1 pc.,
- 1936267137 - jaws U32 for press tool - 1 pc.,
- 1936267139 - jaws U40 for press tool - 1 pc.,
- case - 1 pc.



REMS Power-Press ACC electric press tool

GROUP: K

Range [mm]	*	Code		UM
14-63		1936267219	1	pc.


Note:

The press tool is sold with a case.
The set does not include jaws.



REMS Power-Press SE Basic Pack electric press tool

GROUP: K

Range [mm]	*	Code		UM
14-63		1936267160	1	pc.


Note:

The press tool is sold with a case.
The set does not include jaws.



REMS Akku Press battery press tool

GROUP: K

Range [mm]	*	Code		UM
14-63		1936267152	1	pc.


Note:

The press tool is sold with a battery, charger and case.
The set does not include jaws.



Tool set - Novopress ACO103 BT press tool + "U" profile jaws

GROUP: K

Range [mm]	*	Code		UM
16-32		1936055004	1	pc.

Each set includes:

- battery press tool ACO103 - 1 pc.,
- 1936267113 - jaws U16 for press tool - 1 pc.,
- 1936267114 - jaws U20 for press tool - 1 pc.,
- 1936267115 - jaws U25 for press tool - 1 pc.,
- 1936267116 - jaws U32 for press tool - 1 pc.,
- 1938267047 - charger - 1 pc.,
- 1938267002 - battery 2 Ah - 2 pcs.,
- case.



 coil  bar  pipes in tube  bag  carton box  pallet **N** new  available soon

* custom-made - lead time max 4 weeks | ** availability as agreed | *** while stock lasts



Tool set - Novopress ACO103 BT press tool + "TH" profile jaws

GROUP: K

Range [mm]	*	Code		UM
16-32	*	1936055005	1	pc.

Each set includes:

- battery press tool ACO103 - 1 pc.,
- 1936267108 - jaws TH16 for press tool - 1 pc.,
- 1936267109 - jaws TH20 for press tool - 1 pc.,
- 1936121003 - jaws TH25 for press tool - 1 pc.,
- 1936267111 - jaws TH32 for press tool - 1 pc.,
- 1938267047 - charger - 1 pc.,
- 1938267002 - battery 2 Ah - 2 pcs.,
- case.



Novopress EFP203 electric press tool

GROUP: K

Range [mm]	*	Code		UM
14-63		1948267210	1	pc.

Note:

The press tool is sold with a plastic case.



Novopress ACO203XL BT press tool

GROUP: K

Range [mm]	*	Code		UM
14-63		1948267181	1	pc.

Each set includes:

- battery press tool - 1 pc.,
- battery 18 V / 5.0 Ah Li-Ion Milwaukee - 2 pcs.,
- charger - 1 pc.,
- pubricant - 1 pc.,
- plastic case.



Novopress PB2 "U" profile press jaws

GROUP: K

Size [mm]	*	Code		UM
14	*	1936267231	1	pc.
16		1936267232	1	pc.
20		1936267233	1	pc.
25		1936267234	1	pc.
32		1936267235	1	pc.
40		1936267236	1	pc.

Note:

The jaws work with EFP203 and ACO203XL drives.

Novopress PB2 "TH" profile press jaws

GROUP: K

Size [mm]	*	Code		UM
14	*	1936267222	1	pc.
16		1936267223	1	pc.
20		1936267224	1	pc.
25		1936267225	1	pc.
26		1936267226	1	pc.
32		1936267227	1	pc.
40		1936267228	1	pc.




Note:

The jaws work with EFP203 and ACO203XL drives.

Novopress "TH" profile collar

GROUP: K

Size [mm]	*	Code		UM
50		1936267229	1	pc.
63		1936267230	1	pc.




Note:

The jaws work with EFP203 and ACO203XL drives.
Use with ZB203 adapter.

Novopress ZB203 adapter

GROUP: K

Range [mm]	*	Code		UM
50-63		1948267000	1	pc.



Note:

Adapter for EFP203 and ACO203XL drives.
ultraPRESS: 50-63 mm.
Steel & Inox: 35-54 mm.
Copper: 42-54 mm.



External spring for bending pipes

GROUP: K

Size [mm]	*	Code			UM
16		1936267081	1	60	pc.
20		1936267086	1	40	pc.
25-26		1936267088	1	25	pc.





Note:

The external spring works with PERTAL² and PERTAL pipes.



Internal spring for pipes bending

GROUP: K

Size [mm]	*	Code			UM
16		1936267075	1	10	pc.
20		1936267077	1	10	pc.
25-26		1936267071	1	10	pc.



Note:

The internal spring works with PERTAL pipes.



Combination wrench for G^{3/4}" eurocone adapters

GROUP: K

Size [mm]	*	Code			UM
30	*	1938267035	1	15	pc.

Note:

The wrench is intended for assembling G^{3/4}" Eurocone adapters.



Install your **future**

THE PRODUCTS WITH THE LABEL KAN-therm ARE DISTRIBUTED TO 67 COUNTRIES IN THE WORLD.

The distribution network covers Europe, a large part of Asia and also reaches Africa and America.



HEADQUARTERS

KAN Group

Zdrojowa St. 51, 16-001 Kleosin, Poland.

tel. +48 85 74 99 200

e-mail: kan@kan-therm.com

www.kan-therm.com

Complete multipurpose installation system consisting of modern, mutually complementary technical solutions for pipe water distribution, heating and cooling installations, as well as technological and fire extinguishing ones.

ultra**LINE**

ultra**PRESS**

PP

Steel

Inox

Copper, Copper Gas

XPress Sprinkler

Football Stadium installations

Surface heating and cooling, automation

Cabinets and manifolds

